

LCCC Catalog Policy Changes

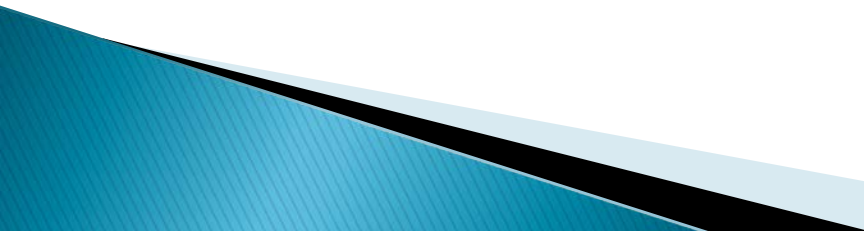
OACC Symposium 2013

Jonathan Dryden

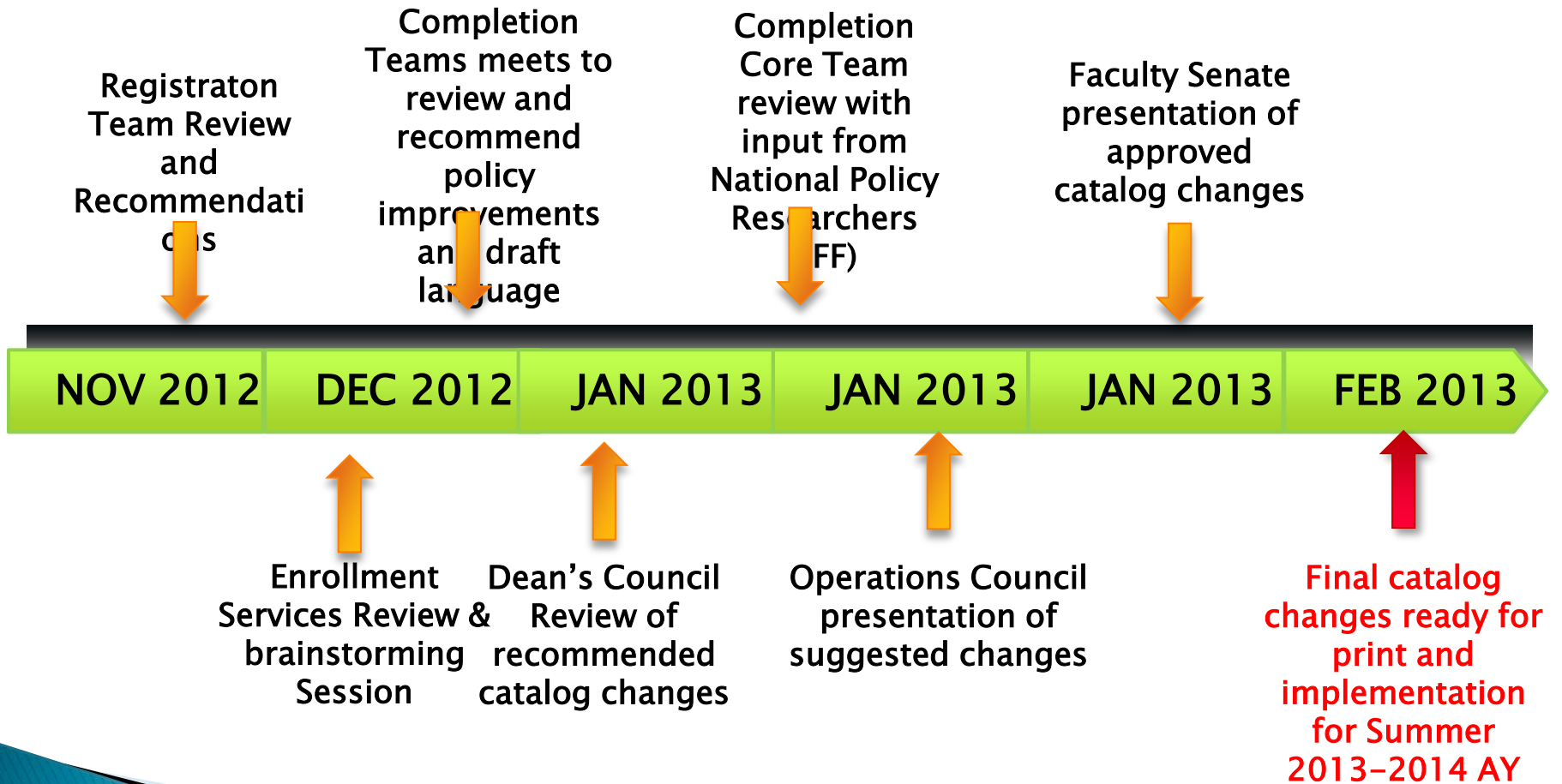
Reviewing Institutional Policies

Gretchen Schmidt of JFF reminds us that “policies can serve as a means to accelerate and enhance student persistence and completion” but they can also “become a barrier and an obstacle to student success.

Catalog Policies Review

- ▶ Beginning of an institutional review of policies, practices and business operations that impact student completion
 - ▶ Completion teams identified catalog policy changes that would encourage student success
 - ▶ Last month LCCC began a more in depth policy review working with Jobs for the Future and their policy review tool.
- 

LCCC Catalog Changes for Student Success Draft Timeline



New Student Requirements (Under Registration Section)

Effective October 26, 2012

- **New Student Orientation prior to registering for college coursework.**
- **College Student Inventory (CSI), an on-line questionnaire, to identify students' strengths for completing educational goals.**
- **Meeting with an Academic Advisor or Academic Counselor to schedule first semester courses and develop a Career Advantage Plan.**

Orientation can be completed either in person or on-line and details are located at www.lorainccc.edu/orientation.

Graduation Requirements

Universal requirements for an associate's degree

A. We reduced the minimum credit hour requirement from 62 to **60**.

B. We no longer require graduating students to be registered in the College during their final semester. This allows us to take advantage of reverse transfer.

Catalog Requirements for Stackable Short-Term Technical Certificates

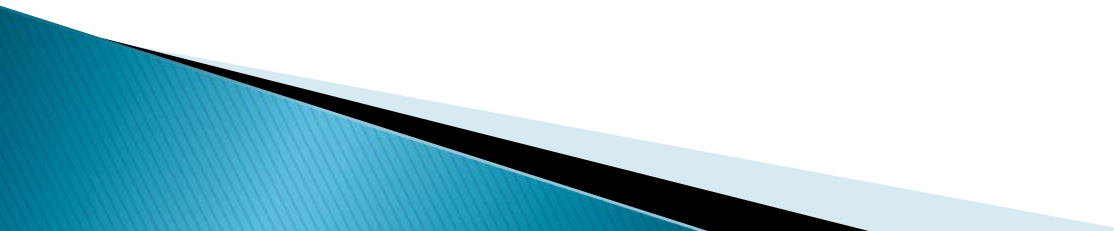
Universal requirements for a short-term technical certificate (previously known as a certificate of completion).

- A. Complete all required hours of coursework (16–29) for the specific short-term technical certificate.
- B. Complete at least 50% of the required certificate coursework at LCCC.
- C. Have an earned cumulative GPA of 2.0 or higher at LCCC.
- D. Complete all incomplete (I) coursework.
- E. Complete an application for a short-term technical certificate
- F. Students who have not completed a graduation candidacy request , but at the end of a semester, meet all the requirements of a short-term technical certificate, may be automatically graduated effective the following term. Students will graduate based on the declared program of study recorded in LCCC's Student Information System.

Documenting Commencement of Attendance

In online classes it is no longer sufficient for students to log-in to demonstrate commencement of attendance.

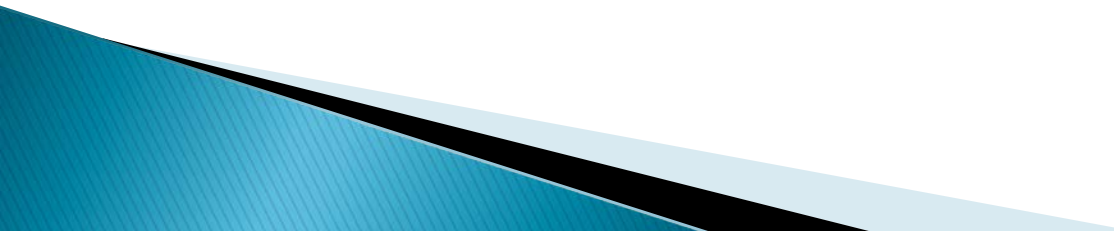
The online class instructor must document commencement of attendance by demonstrating that a student participated in class or engaged in an academically related activity.



Placement Assessment

In the past, students were able to take up to 12 credit hours without participating in the placement assessment process.

Now, new students to the college are required to take placement exams when they register for more than three credit hours.



Reassessment Policy:

Students who wish to improve their placement scores will be required to participate in mandatory preparation (i.e., an academic boot camp or another approved on-line review) before permission is granted for reassessment.

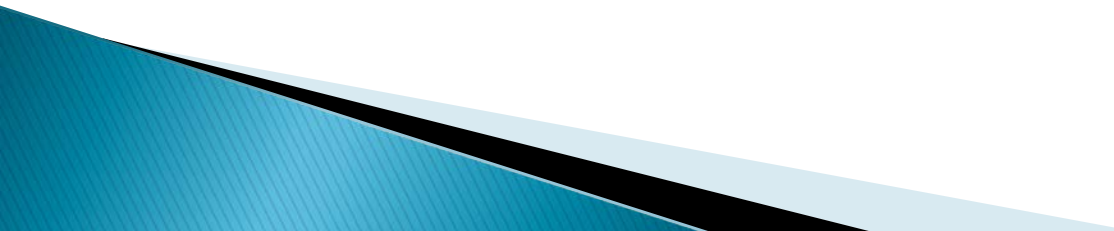
LCCC's Data: Of the 47 students participating in the Math Boot Camp, 21 (44%) passed at least one level of developmental math and were placed in a higher level math

One student passed all developmental math levels and was placed in college level math.


**§ Cost savings achieved for students placed in higher level –
> \$5,496**

Academic Foundations Division

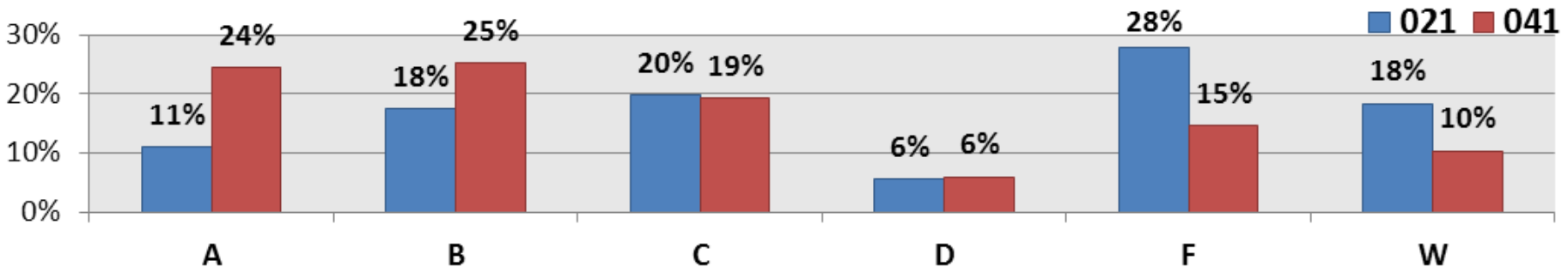
Students who place into three developmental education subjects (i.e., math, English, and reading) will now be required to enroll in SDEV 102, Strategies for College Success, to support their academic success.



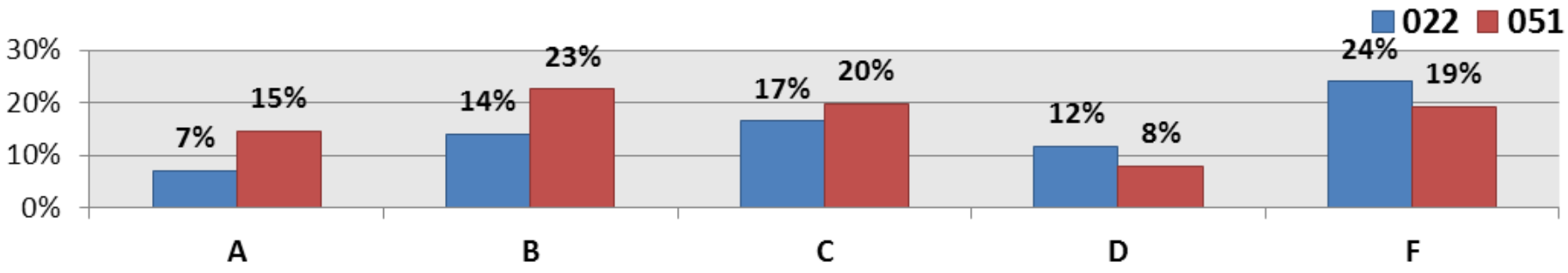
Mandatory Entry into Academic Foundation (AF) Courses and English and Math Sequencing

- Students must take their AF courses before enrolling in any other college courses.
 - If students are enrolled in all of their AF courses, they may take other courses concurrently
 - AF courses must be taken consecutively and sequentially until the required sequence is completed
 - Extenuating or unusual circumstances will be considered on a case by case basis.
- 

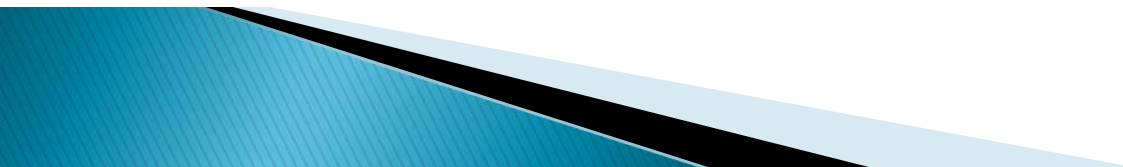
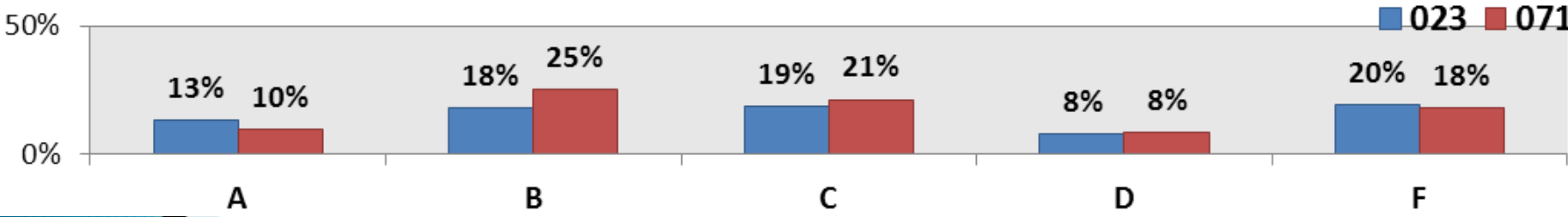
Pre Algebra (3 Levels Below College Level)



Beginning Algebra (2 Levels Below College Level)

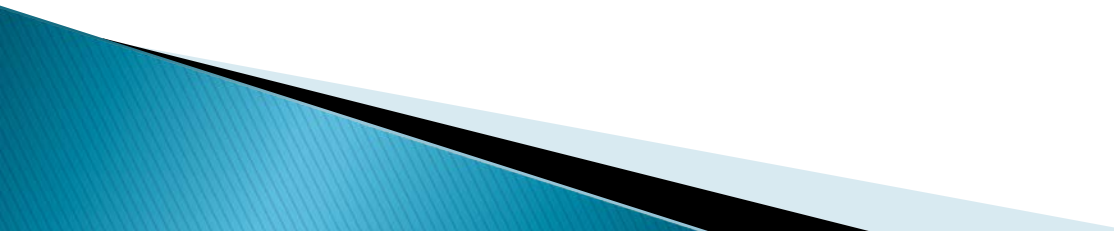


Intermediate Algebra (1 Level Below College Level)



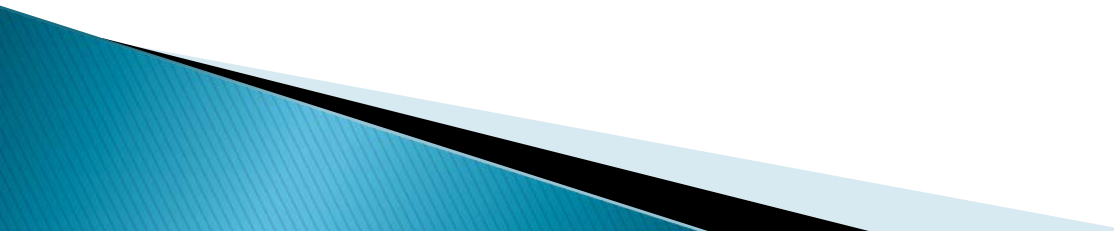
Academic Probation and Dismissal

Students on Academic Probation will have a **registration hold** placed on their MyCampus account and they will need to meet with a Career and Academic Advisement Professional or Academic Counselor to register for classes or adjust their schedule.



Late Registration


As part of LCCC's commitment to student success, late registration is not permitted. If a student is unable to attend the first class meeting, they will not be permitted to register for the course. In distance learning classes, registration must be completed prior to the course start date.



Distance Learning Technology Readiness Assessment Catalog Policy

Students must complete the Distance Learning Technology Learning Readiness Assessment (DLTRA) in order to gain access to their online courses.

Once students have mastered the assessment, they will be able to access their current courses on the course begin date and also meet the Distance Learning Technology Readiness Assessment requirement for future distance learning and blended coursework.



Parking Lot

- ▶ **Withdrawal Policy**
 - Should instructor or division sign off on withdrawal forms before they are processed?
- ▶ **Repeat Course Policy**
- ▶ **Attendance Policy**
- ▶ **Midterm Grades**
- ▶ **Time limit on pre-requisites and assessments**

Moving the Needle

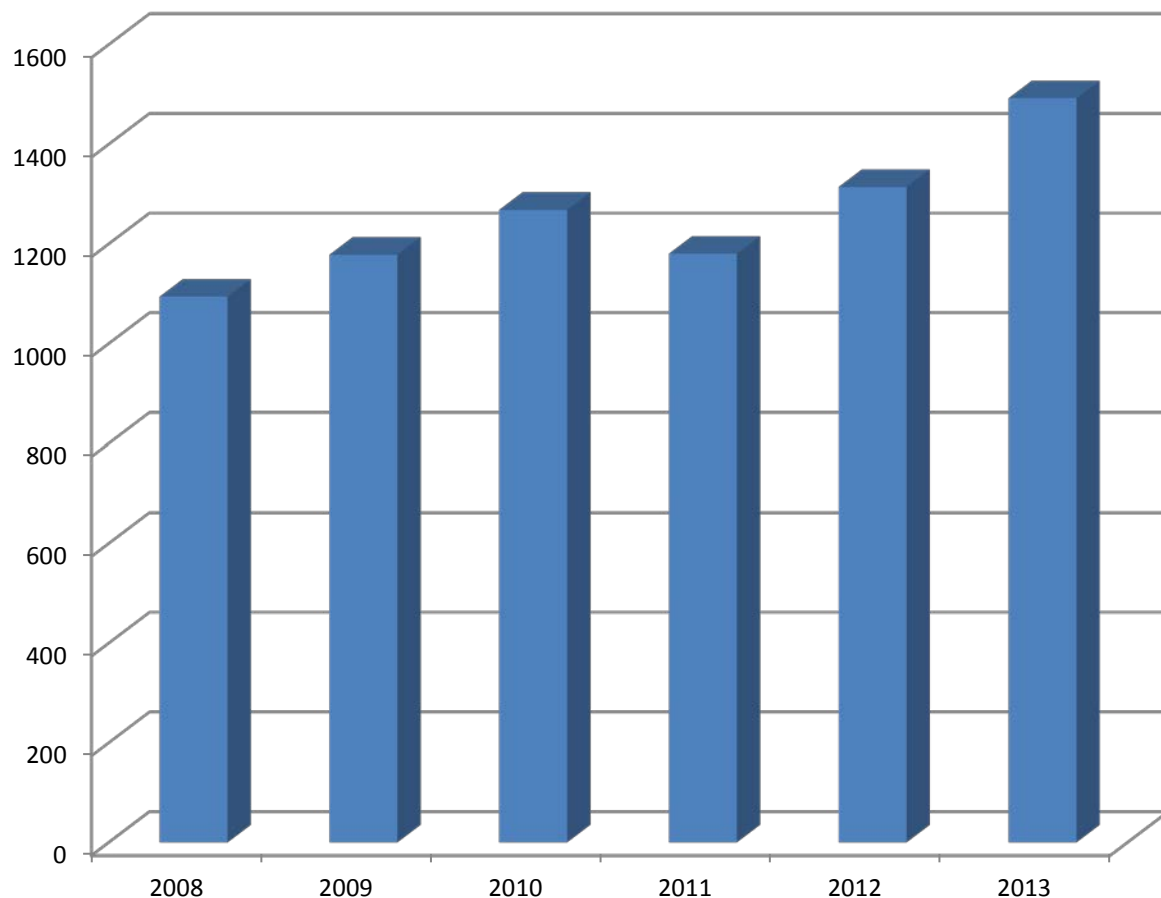
And already making a difference!

26.4% INCREASE
since planning
grant was issued
in 2010!



- 1,314 Degrees in 2011-12 = 11%
- 1,492 Degrees in 2012-13 = 14%

No. of Graduates



Questions?

- ▶ Jonathan Dryden, Interim Dean
Social Science & Human Services
jdryden@lorainccc.edu
440-366-4730
- ▶ Stephanie Sutton, Dean
Enrollment, Financial & Career Services
ssutton@lorainccc.edu
440-366-7622